

[Schedule](#)

Device
Checkout

[English](#) [Español](#)

Mountain Point FLEX Friday

Click the links to
find more
information

[Info.](#)

[K](#)

[1](#)

[2](#)

[3](#)

[4](#)

[5](#)

[6](#)

[Learning
Pathways
Overview
by Grade](#)

The background features a large, light blue dashed line that curves across the page. Various colored circles and rings are scattered around: a large teal ring in the top left, a green circle in the top right, a yellow ring in the bottom right containing a red house icon, and several other circles in shades of green, orange, and pink. The text is centered in the upper half of the page.

Schedule for in-person learning

- 9am start time
- 12:15pm Grab-and-go lunch available
- Students for in-person learning are dismissed at 12:15pm.
- Bus and crosswalk supervision will be available at 1:00pm.
- Students may stay on campus to eat lunch and have a supervised recess until 1:00pm.



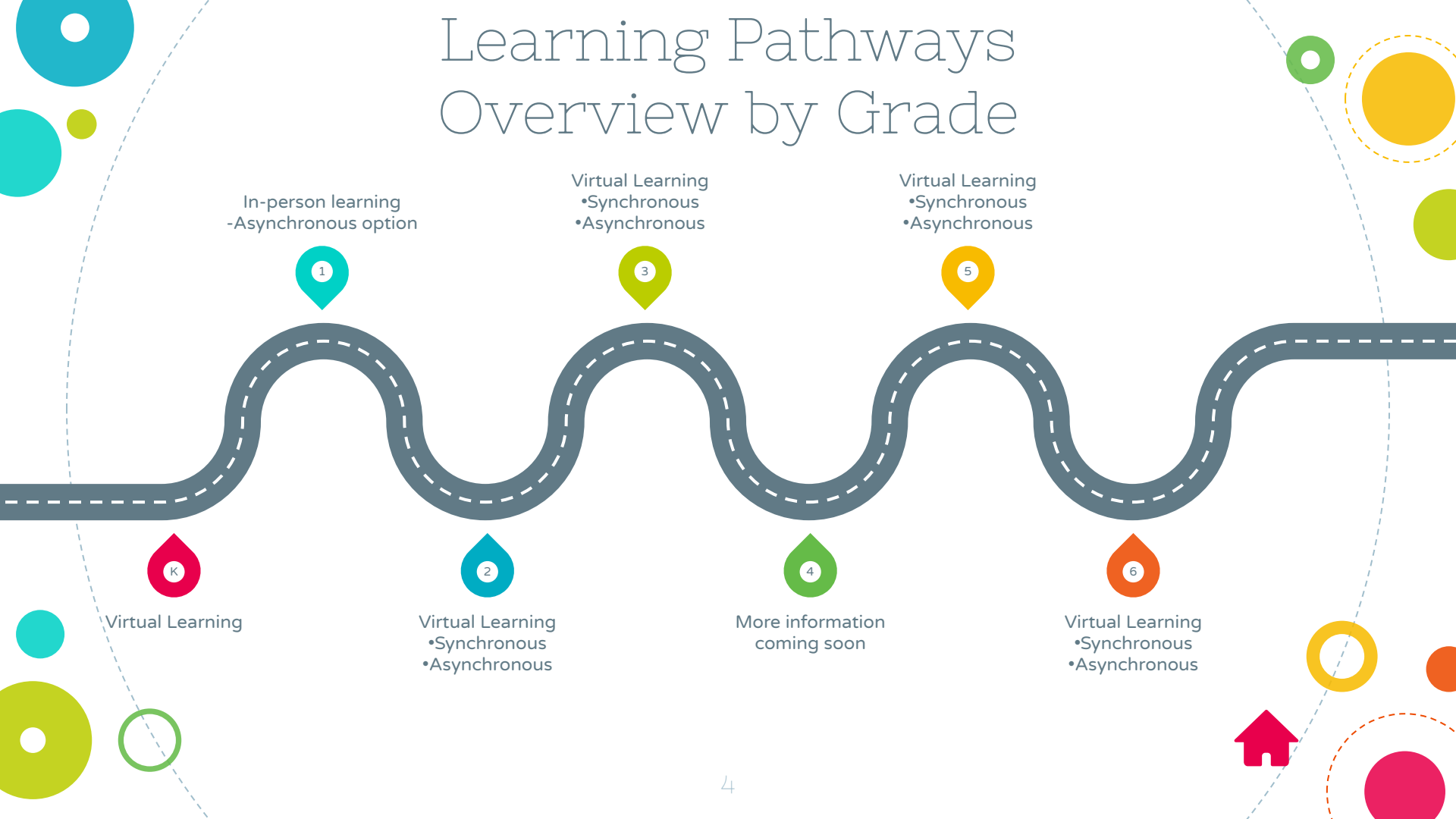
District Guidelines



- Principals may structure Flexible Friday schedules to meet school needs.
 - Schedules will be based on consistent building blocks: 3 hours student engagement, PLC time (if not held Monday -Thursday), regular Friday contract and prep time, grab and go lunch.
 - Exact schedules and expectations will vary by school.
 - On Flexible Friday, students should all have something they are working on.
 - Teachers can give new assignments on Flexible Friday, or can ask students to continue work from the week.
- Students cannot be required to attend in person on Flexible Fridays, but teachers and teams may make arrangements with parents for individuals or small groups of students to attend scheduled in-person instructional activities.
 - It is not expected that students meet with teachers synchronously throughout the day.
 - Time will be set aside for collaboration/planning, teacher-initiated student interaction, and teacher availability.
 - Teachers can set up live or recorded video interactions with students on Flexible Fridays.



Learning Pathways Overview by Grade



The background is white with various colorful circular and ring-shaped elements. In the top left, there is a large orange ring with a dashed white inner circle, overlapping a yellow circle. Below it is a pink circle. To the right, a large teal ring is partially visible. In the bottom right, there is a teal circle with a red house-shaped arrow pointing up towards it. Other smaller circles in green, yellow, and pink are scattered throughout.

K

More information
coming soon

Kindergarten Information and Expectations



1

First Grade
Information and Expectations





2

Second Grade
Information and Expectations

The background is white and decorated with various colorful geometric shapes. In the top left, there is a large orange ring with a dashed red inner circle, overlapping a yellow circle and a small pink circle. In the top right, there is a green circle with a white dot inside, a smaller yellow circle, and a green circle with a dashed yellow border. In the bottom left, there is a green circle with a dashed green border, a large lime green circle, and a small cyan circle. In the bottom right, there is a large cyan ring, a cyan circle with a dashed cyan border, and a red house-shaped icon. A large, light blue dashed circle is centered in the upper half of the page.

3

Third Grade
Information and Expectations

The background is white with various colorful decorative elements. There are several circles in shades of orange, yellow, green, and teal. Some are solid, some are dashed outlines, and some are thick rings. A large teal number '4' is centered within a large dashed circle. A pink cloud-shaped callout bubble with a scalloped edge is on the left, containing the word 'Click' in pink and an arrow pointing towards the title. A red house-shaped icon is on the bottom right, pointing towards a teal circle. The title 'Fourth Grade Information and Expectations' is centered below the '4'.

4

Click

Fourth Grade Information and Expectations



5

Fifth Grade
Information and Expectations
Español

The background features a variety of colorful geometric shapes, including solid and dashed circles in shades of orange, yellow, green, teal, and pink. A large, light blue dashed circle is centered at the top, containing the number 6. The overall design is modern and vibrant.

6

Sixth Grade
Information and Expectations